



EAGLE MOUNTAIN HS



Northern side of campus facing south.



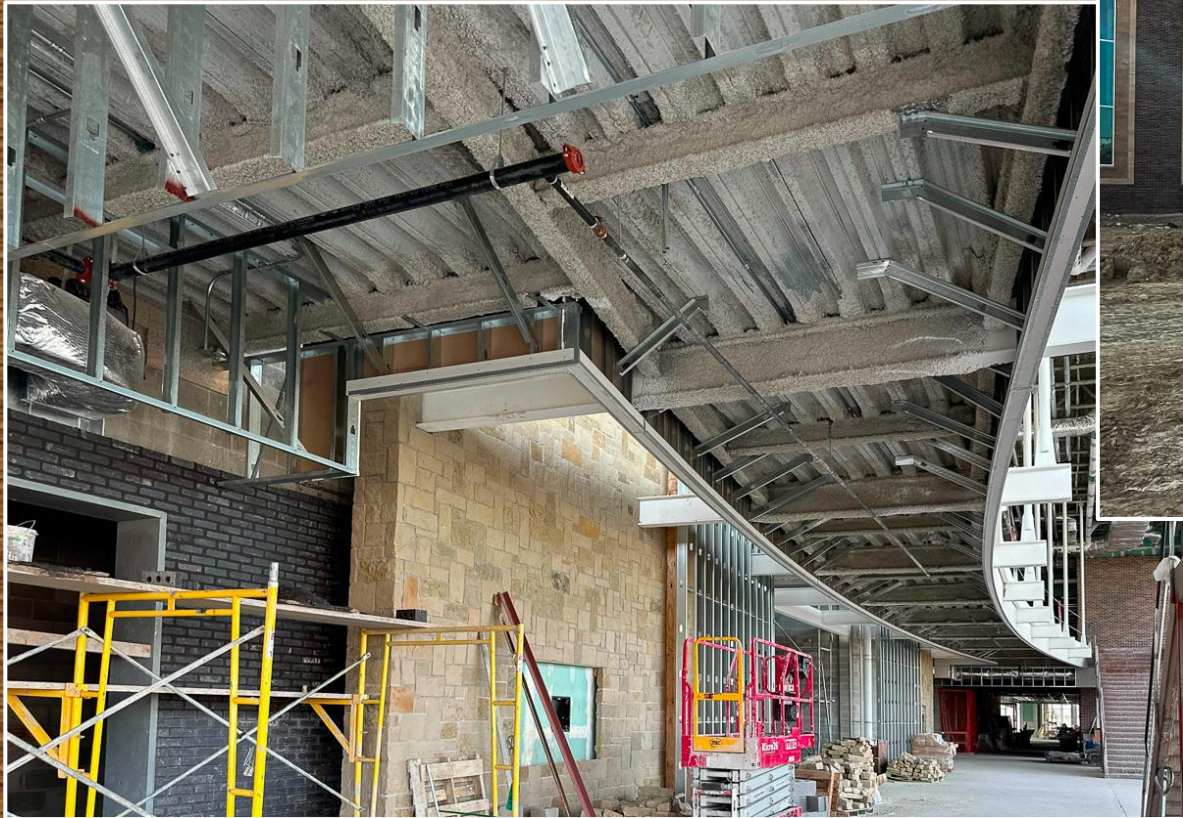
Southern side of campus looking north.



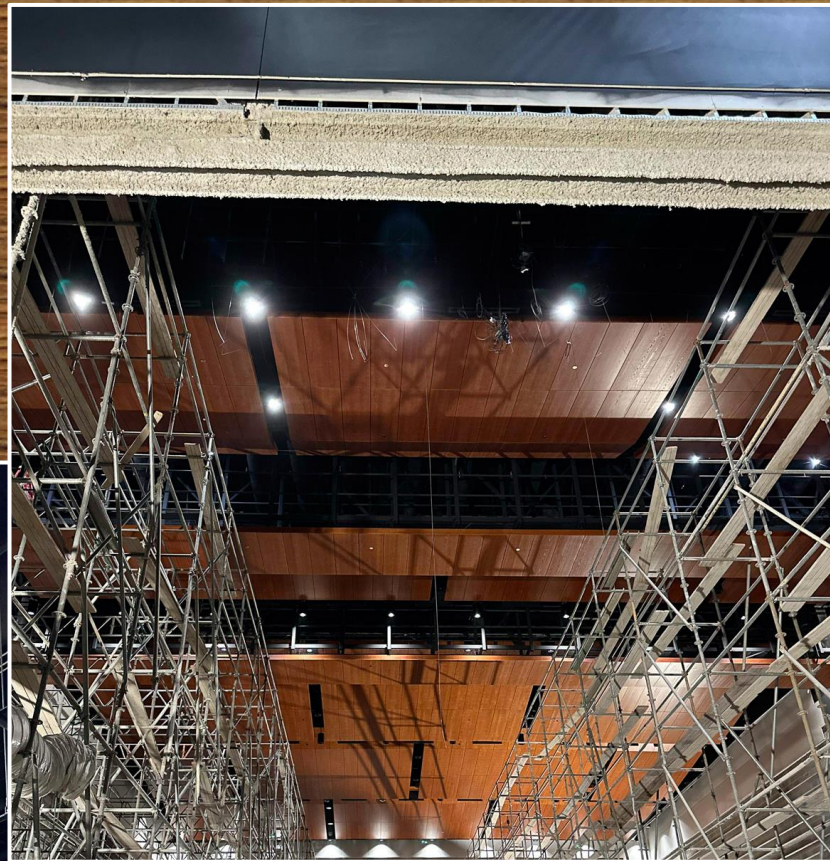
Western side of campus looking east.



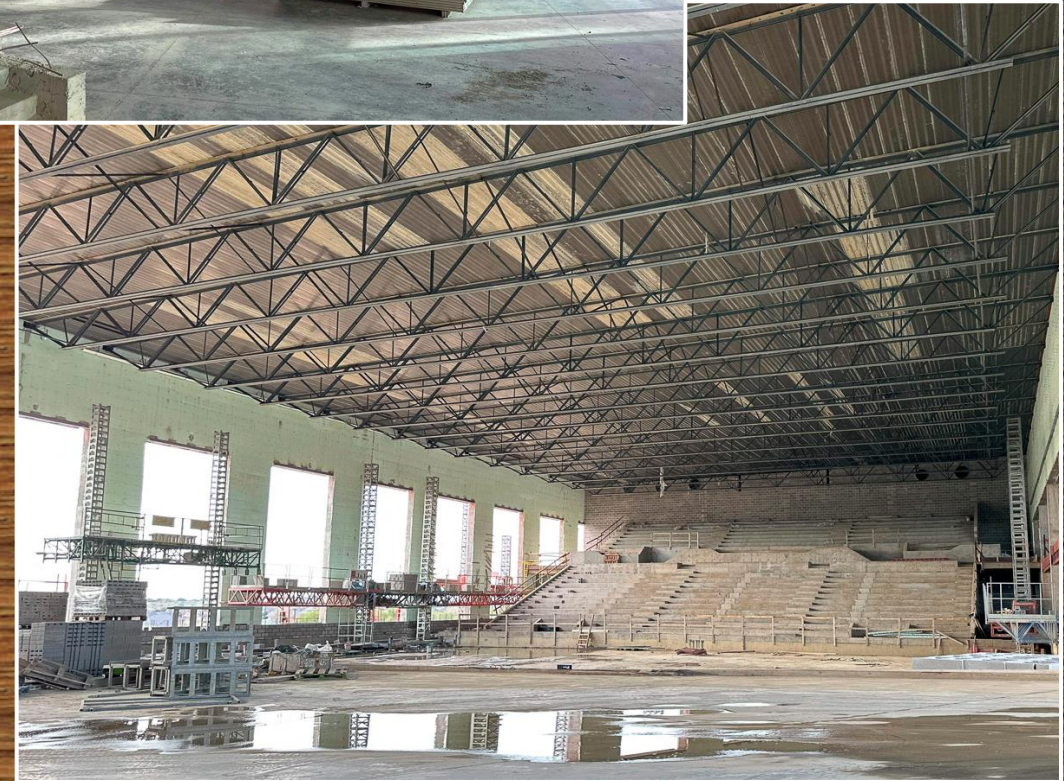
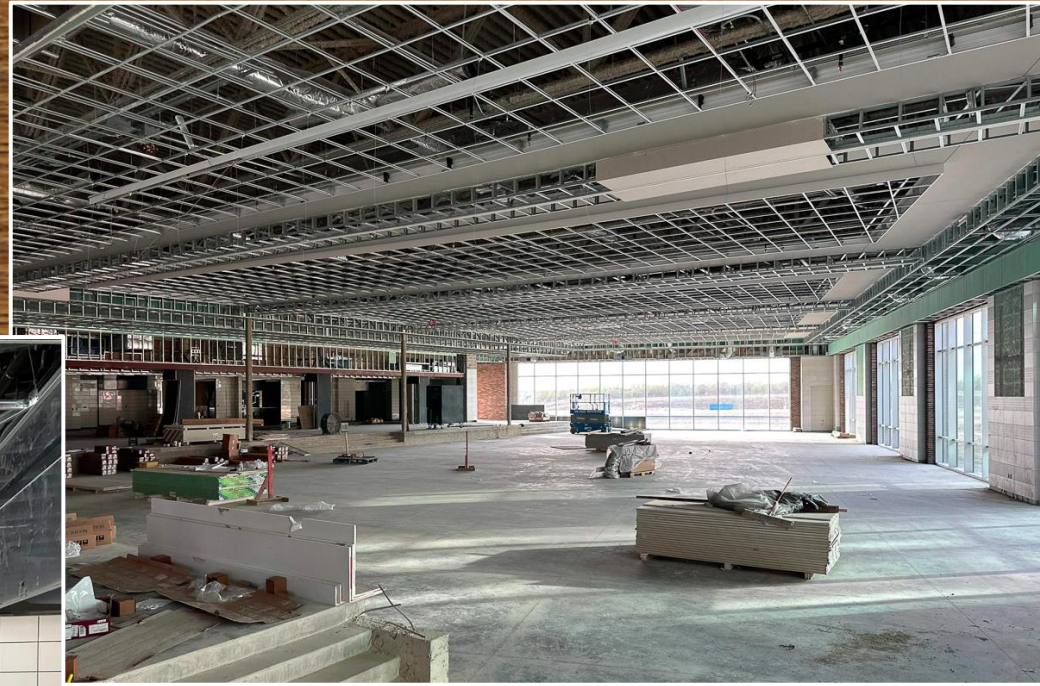
View of the stadium and field house.



Glazing, fascia metal, stone, and brick veneer has been installed in the auditorium entrance.



- Drama classroom pipe grid and ductwork has been installed.
- Auditorium cloud ceiling is installed and scaffolding is being dismantled.
- Auditorium stage rigging equipment installation is in progress.

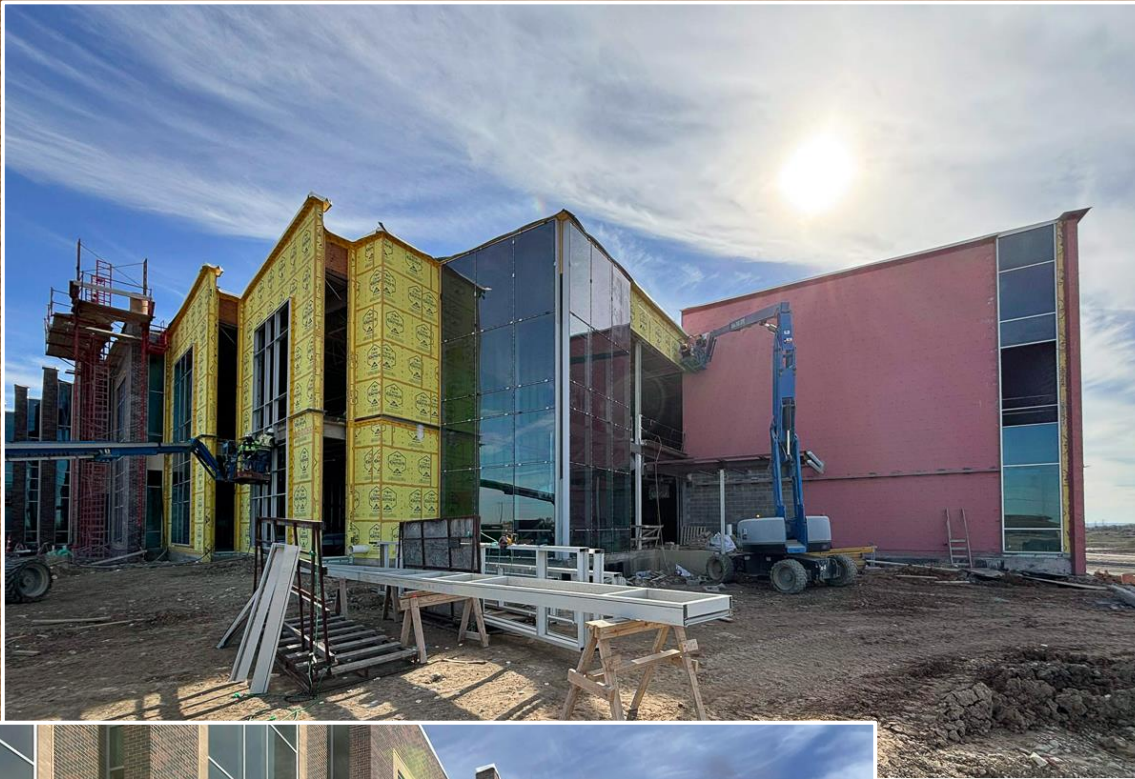


- Kitchen floor tile installed and protected. Ceiling grid is installed.
- Cafeteria ceiling grid has been installed.
- Competition gym steel decking is complete and roofing is ongoing.



Large lecture hall interior stone veneer is in progress.





- Northwest corner academic building glazing has been installed.
- Academic buildings brick and stone veneer is complete.





- Skybridge sheathed in preparation for soffit panels.
- Pressbox glazing and metal panel is in progress.

